



# Trails and Greenways Committee

Monday, July 11, 2022 at 6:00 pm

1. CALL TO ORDER, PRAYER AND PLEDGE
2. ROLL CALL
3. ADDITIONS/DELETIONS/CHANGES
4. CONSENT AGENDA
  - a. Approval of Minutes of 06/13/2022  
Exhibit: Agenda Report Number 4a

**Attachments:**

- **Agenda Report Number 4a** (Agenda\_Report\_Number\_4a.pdf)

5. PUBLIC COMMENTS
6. ACTION ITEMS
7. DISCUSSION ITEMS:
  - a. Trail, Kiosk and Firebreak Conditions  
Exhibit: Agenda Report Number 7a

**Attachments:**

- **Agenda Report Number 7a** (Agenda\_Report\_Number\_7a.pdf)

- b. Trail Accelerator Grant  
Exhibit: Agenda Report Number 7b

**Attachments:**

- **Agenda Report Number 7b** (Agenda\_Report\_Number\_7b.pdf)

- c. Eagles Nest Trailhead Update  
Exhibit: Agenda Report Number 7c

**Attachments:**

- **Exhibit: Agenda Report Number 7c** (Agenda\_Report\_Number\_7c.pdf)

- d. Next Field Event - TBD
8. OLD/NEW BUSINESS
  - a. Board Member Comments
  - b. Staff Reports

**c. Next Scheduled Meeting Date - 08/08/2022**

**9. ADJOURNMENT**

---

Contact: Richard W. Kohler (rkohler@townofmalabar.org 321-727-7764) | Agenda published on  
07/07/2022 at 4:26 PM

# TOWN OF MALABAR

## TRAILS AND GREENWAYS COMMITTEE MEETING

**AGENDA ITEM NO: 4.a**  
Meeting Date: July 11, 2022

Prepared By: Richard W. Kohler, Deputy Clerk/Treasurer

---

**SUBJECT:** Approve Minutes of 6/13/2022

---

**BACKGROUND/HISTORY:**

- a. Summary of Actions at the Trails and Greenways Committee Meeting of 6/13/2022.

**ATTACHMENTS:**

- a. Draft Minutes of T&GC Meeting of 6/13/2022

**ACTION OPTIONS:**

- a. Request Approval

**13MALABAR TRAILS AND GREENWAYS COMMITTEE REGULAR MEETING**  
**June 13th, 2022, 6:00 PM**

This meeting of the Malabar Trails and Greenways Committee was held at Town Hall at 2725 Malabar Road.

**1. CALL TO ORDER, PRAYER AND PLEDGE:**

Meeting called to order at 6:02 P.M. Prayer and Pledge led by Chair Thompson.

**2. ROLL CALL:**

CHAIR:	DREW THOMPSON
VICE-CHAIR:	MURRAY HANN - EXCUSED
BOARD MEMBERS:	ANNELIE HARVEY - EXCUSED
	BOB WILBUR
	DANIEL WAITE
ALTERNATES:	MARK BRITT
	MIKE SCHOOLFIELD
GRANT/VALKARIA LIASON:	CRAIG SMITH
BOARD SECRETARY:	RICHARD KOHLER

**3. Additions/Deletions/Changes-** Secretary Kohler requested that Mr. Schoolfield read his Oath of Office. With no objections, Mr. Schoolfield read and signed his Oath of Office. Mr. Schoolfield thanked the Committee for accepting him.

Chair Thompson stated how pleased he is that the Committee is a diverse spectrum of Malabar Residents.

**4. CONSENT AGENDA**

**4.a. Regular Trails and Greenways Committee Mtg Minutes of 4/11/2022**  
**Motion to accept 04/11/2022 as amended by Wilbur/Waite**

**All Ayes: Carried 5-0.**

**5. PUBLIC COMMENTS:**

**6. ACTION ITEMS: NONE**

**7. DISCUSSION**

**a. Trail, Kiosk and Firebreak Conditions**

Secretary Kohler states that there has been reports of trees blocking trails, but the Trail Crew has been quick to correct these issues. Chair Thompson thanked the BMBA and the trail crew. Liaison Smith stated that Saturday the 25<sup>th</sup>, the BMBA would like to do a trail workday. They will track and turn in a volunteer sign in sheet. Committee consensus is that would be fine.

**b. Signage Update**

Chair is unsure how many of the maps we will need, but he has drafted directional signs for approval tonight. The Cameron Preserve signs will be smaller than the existing ENT signs. They will be placed at all trail entrances into the Cameron Preserve. CM Waite asks if the Town Logo can be included without the white box? Secretary Kohler states that the design will be subject to change with implementation, but the overall design will stay the same. Chair then discussed where he felt the signs should be placed, using the map included in the agenda packet.

CM Waite suggests changing the color of the green trail sign to a color-blind neutral color. Chair suggests using black and white color with the color spelled out. Chair then discussed the map updated by VC Hann. Liaison Smith states it looks excellent. CM Wilbur suggests including an arrow pointing to the Eagles Nest Trailhead, as well as adding a QR code. CM Britt asked why the EELs logo is on the map? Chair explained that the EELs program gave us the original aerial photography, but that does make it look like they did this work. We will work to rephrase this portion before production. Chair suggests staging a photo op with horses, bikes and pedestrians crossing Malabar Road at Marie Street. CM Schoolfield asks if the "No Motorized Vehicles" would restrict One-Wheels? Liaison Smith explained the technical difference between a one-wheel and a motorized vehicle. He then explains that the BMBA had a rough transition with the E-Bikes and One-Wheels. They have begun to integrate well and have conformed to the general rules. Long story short, it will likely be impossible to keep them out of the trails.

**c. Eagles Nest Trailhead**

Secretary Kohler informed the Committee that the Town will provide dirt once they have procured a sifter to sort the dirt. CM Wilbur states existing dirt should be sufficient. Chair Thompson states that Council Member Vail offered some equipment as well.

**d. IMBA Trail Accelerator Grant**

Secretary Kohler informed the Committee of the potential for this Grant, and his hopes that the Committee will work to draft the proposal. Chair Thompson suggests focusing on the "Zig-Zag Trail" from Corey Rd to the Al Tuttle Trail. Consensus is to pursue the Zig-Zag Trail for this grant.

**e. Next Field Event - TBD**

8 O'clock AM on Saturday June 25<sup>th</sup> at the Swallow-Tailed Kite Trailhead.

**8. OLD/NEW BUSINESS**

**a. Board Member Comments:**

- Liaison Smith thanked the Committee for its time.
- Chair Thompson suggested contacting the Manager of the Malabar Harris Plant.

**b. Staff Reports:**

**c. New Business:**

- Next Regular Meeting- July 11<sup>th</sup>, 2022

**9. ADJOURN**

There being no further business to discuss;

**MOTION WILBUR/BRITT to adjourn. Vote: All Ayes.** The meeting adjourned 7:19 PM.

BY:

\_\_\_\_\_  
Drew Thompson Chair

7/11/2022

\_\_\_\_\_  
Date Approved: as presented:

\_\_\_\_\_  
Richard W. Kohler, Board Secretary

# TOWN OF MALABAR

## TRAILS AND GREENWAYS COMMITTEE MEETING

AGENDA ITEM NO: 7.a

Meeting Date: July 11th, 2022

Prepared By: Richard W. Kohler, Deputy Clerk/Treasurer

---

**SUBJECT:** Trail, Kiosk and Firebreak Conditions

---

**BACKGROUND/HISTORY:**

- a. Traditionally, members of the Committee share their recent experiences from the trails and at the trailheads.

**ATTACHMENTS:**

- a. None

**ACTION OPTIONS:**

- a. Discussion

# TOWN OF MALABAR

## REGULAR TOWN COUNCIL MEETING

**AGENDA ITEM NO: 7.b**  
Meeting Date: July 11th, 2022

Prepared By: Richard W. Kohler, Deputy Clerk/Treasurer

---

**SUBJECT:** Trail Accelerator Grant

---

### **BACKGROUND/HISTORY:**

- a. On May 10, 2022, Town staff became aware of a grant offered by the International Mountain Bike Association (IMBA).
- b. On May 16th, Council approved Staff to work with the T&GC to complete a submission for this grant.
- c. The grant offers matching funds for the planning aspects of trail improvements.
- d. Malabar Trails and Greenways Committee has several projects that are in the design and planning phase that could be applied for, such as the "Zig-Zag" Trail, the Briar Creek Blvd. Underpass project, and the Eagles Nest Trailhead.
- e. The grant is open for submissions between June 1<sup>st</sup>, and July 31<sup>st</sup> of 2022.
- f. Staff would like to pursue matching funds, with assistance from the T&GC in drafting the grant proposal.
- g. At the June 13 T&GC Meeting, the Committee agreed to work towards a grant seeking funds for the design and engineering of the "Zig-Zag Trail" proposed at the Swallow Tailed Kite Trail Head.

### **ATTACHMENTS:**

- a. IMBA Trail Accelerator Grant Information
- b. Email exchange with P.E. Trauger about preliminary plans for the Zig Zag Trail

### **ACTION OPTIONS:**

- a. Request Action

# Trail Accelerator Grant Program

Application period open  
June 1, 2022 to July 31, 2022





# Table of Contents

- ❖ Introduction
- ❖ Program Overview
- ❖ Impact to date
- ❖ Who Can Apply?
- ❖ Timeline
- ❖ Filling out the Application
- ❖ What You Will Need
- ❖ Other Things to Think About
- ❖ The List of Questions
- ❖ We Are Here to Help
- ❖ IMBA Dig In Program, funded by Shimano



IMBA's mission is to create, enhance and protect great places to ride mountain bikes.

We understand that in order to grow the quantity and quality of mountain bike trail communities, we need to accelerate the pace of trail building. Trail Accelerator grants provide a jump-start to communities that have the interest and political support to develop trail systems, but need assistance to get projects up and running.

A Trail Accelerator grant offers awardees professional trail planning and consultation services to launch their trail development efforts, which can often leverage additional investment from local, regional, and national partners.

#MoreTrailsClosetoHome



INTERNATIONAL MOUNTAIN BICYCLING ASSOCIATION

# Program Overview

This grant results in a planning process and documentation for your project. It is not a cash grant. Grants typically range from \$5,000-\$30,000 and they require a one-to-one match. For example, if you are awarded a \$5,000 grant, you must commit an additional \$5,000 to IMBA. If you are awarded a \$30,000 grant, you must commit an additional \$30,000 to IMBA. Finalists will receive a call from IMBA Trail Solutions staff to clarify any questions and to discuss and define the scope of work, tasks, and final deliverables of the proposed Trail Accelerator grant project. **A phone call does not mean that a grant has been awarded.** For grant awardees, the agreed-upon trail planning process will be different for each site based on the desired outcomes and will be clearly documented in a contract between the applicant and IMBA. The deliverables will include trail plans in the form of written reports and maps, based on the scope of the project.

## What Types of Projects Will Be Considered?

- ❖ Projects that serve mountain bikers as the primary users, though multi-purpose human-powered trail uses are viable as well.
- ❖ Projects that will result in a visible and substantial increase in access, improved mountain bike experiences, and greater community benefit.
- ❖ Projects where the Trail Accelerator grant stands to leverage additional resources to ensure the success of the project.
- ❖ Projects that promote community development, volunteer recruitment, new rider development, youth riding, and engaging marginalized community members. Higher preference will be given to projects that demonstrate a focus on diversity, equity, and inclusion.
- ❖ A declined request does not imply that the project is not needed or valued. Those who do not receive a grant award may apply again in subsequent rounds (and we hope you do!).

# Impact to Date



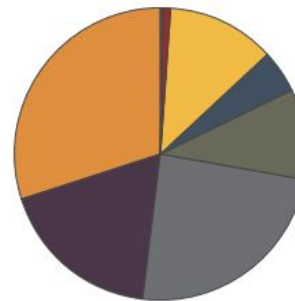
TAG

By the Numbers

2018 - 2020



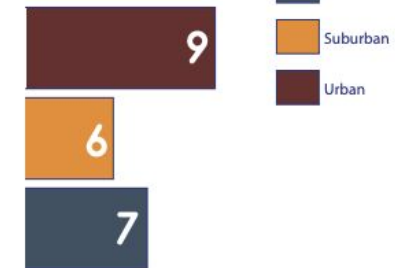
Total Additional Funding Unlocked  
**7.85 Million**



Sources of Additional Funding

- Foundations
- Private Donations
- RTP Grants
- Corporate Donations
- Mountain Bike Groups
- Municipalities
- In-Kind Volunteer Labor
- Room Tax

Communities Impacted



6 Projects Provide Venues for NICA Teams



**NICA** NATIONAL INTERSCHOLASTIC CYCLING ASSOCIATION

# Who Can Apply?

Local, municipal, state, or federal government agencies, and 501(c)3 nonprofits that actively manage parks and trails may apply. Mountain bike clubs and IMBA Local partners with the capacity to match and manage a grant of this scale are eligible to apply—this is new as of the Spring 2020 grant round.

The organization applying must be able to provide the matching funds. Please see information later in this document to learn more about how agencies disburse grant funds.

- ❖ Projects which are primarily based on private land are not eligible to apply.
- ❖ Private organizations including ski resorts, HOAs, or property developers are not eligible to apply
- ❖ Religious organizations for religious purposes, private foundations, and political causes/candidates/legislative lobbying groups are not eligible to apply.

# TAG Timeline

- ❖ Planning toolkit available on IMBA.com
  - **May 3, 2022**
- ❖ Grant Cycle Opens
  - **June 1, 2022**
- ❖ Grant Cycle Closes
  - **July 31, 2022**
- ❖ Selection process begins
  - **August 1, 2022**
- ❖ Announcement of round 6 awardees
  - **Mid-October 2022**

# Filling Out the Application

You can help us by supplying the most thorough answers possible, which will help move your project to the top of the list. There are two critical things we want to understand:

- ❖ How your project involves and benefits your community (the vision behind the project)
  - I.e., will your project provide access for underserved communities? Tie in with youth programs?
  - Before you apply, think through the ways your project will align with broad community needs.
- ❖ The true scope of your project (the nitty gritty of what you want to build)
  - We'll ask a lot of detailed questions about what you're trying to accomplish.
  - Be sure to think through how your project timeline will unfold, how you plan to get to the next steps, etc.

*\*\*Please know that even if you don't have a lot of knowledge in the trail development realm, we still want you to apply! If you're confused or get stuck anywhere in the application process, don't hesitate to reach out. Let's work together to make your trail dreams a reality.*

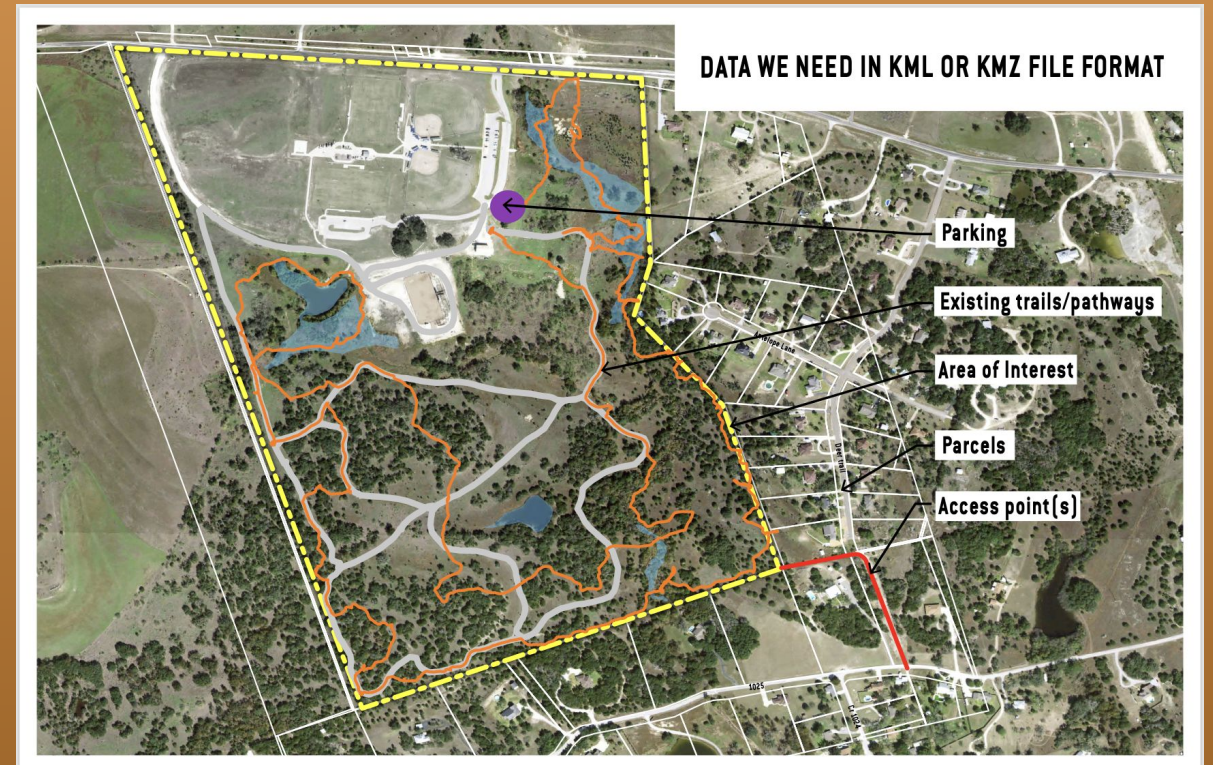
# What You Will Need

## 1. A .kmz file of your project area

[Click here for a tutorial](#) on creating a .kmz file from an area of interest:

In your file, please include things such as:

- ❖ project area delineation
- ❖ property boundaries
- ❖ hydrology
- ❖ areas of cultural significance
- ❖ existing amenities like trails, parking, etc





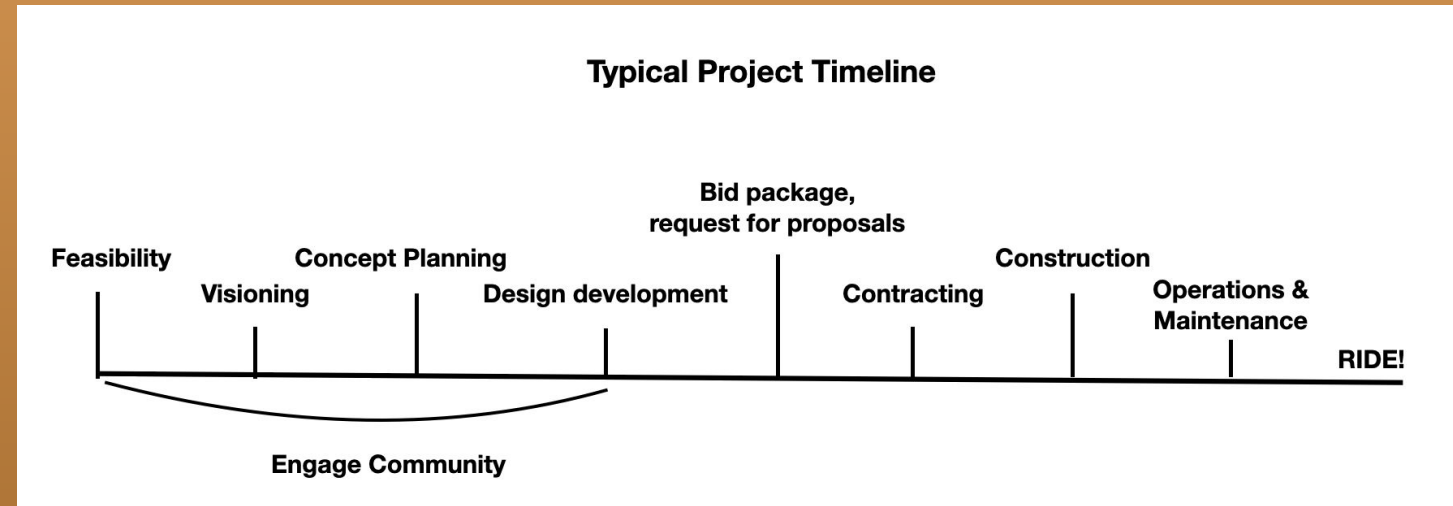
**DATA WE NEED IN KML OR KMZ FILE FORMAT**



# What You Will Need

## 2. Timeline of your project

Most trail projects follow a general timeline from start to finish. We'll be asking you to give us an idea of when you think your project might hit these milestones.



# What You Will Need

## **3. Assurance from your agency or organization that this grant is compatible with your financing processes.**

- ❖ If you represent a municipality or other agency that goes through procurement, contact that department and ensure that they can disburse the funds for your half of the match. We will be asking you to confirm that the funds will be available at the time of contract signing.
- ❖ If you're with a mountain bike or trail organization, you can simply confirm that your secretary or accountant will make the funds available at the time of contract signing.

# Other Things to Think About

## **Partners:**

Robust trail projects come to life through partnerships. We'll be asking you about the organizations or agencies you're partnering with to bring this project to fruition.

## **Community Engagement:**

Every project needs to be filtered through the community for feedback and improvements. This is often how you find financial partners, too. We'll be asking you how you plan to approach this part of the process..

## **Implementation:**

Just like you, we want to see this project become reality. Think about how you and your partners will get to the next steps, whether it's fundraising, design, or construction. We'll be asking you how you'll get there.

## **Funding:**

We will be asking you questions about how much you anticipate things will cost. **But don't be worried if you don't have much funding currently.** These grants are here to help in that exact situation. Once planning documents are made, they are the perfect marketing tool for fundraising, because they bring a lot of ideas into focus. The visual nature of a planning document gets people excited about the possibilities.

# Social Media Requirements

A requirement of receiving funding is to post about the grant and how it's helping your project/community. Take a few minutes to decide which social media channels will work best, since we'll be asking for those links in the application.

## ❖ Hashtags to Use:

- #trailacceleratorgrant
- #moretrails closetohome

## ❖ Our Handles

- Instagram @IMBA\_US
- Facebook @IMBAonFB



# And Finally... Here are the Questions

## SECTIONS 1 & 2: You, Your Organization and Partners

1. Name, email, phone number, website, etc.
2. Describe your organization/department including numbers of staff or volunteers, board members, and mission statement.
3. Do you have written support from three local officials for this project? This includes both land managers and elected officials. Please list their names, positions, and phone numbers.
4. Describe another community project your agency or coalition has undertaken and has seen success with. Tell us about the larger community impacts.
5. What other community organizations are you partnering with on this project?
6. Has a representative from your committee or community attended an IMBA Trail Lab or will they be attending an upcoming Trail Lab?
7. Part of your requirement as an awardee requires you to post about the grant on social media. Please provide the social media feed(s) you will use to promote your project and the TAG grant.
8. Part of your requirement as an attendee is to provide follow-up information to IMBA about the grant and its impact. Please provide the name and email address of the best person to contact.

# Section 3: Project Background and Details

1. Project title
2. Project location/name of parcel. Please attach a GoogleEarth .kmz file that delineates your project area(s). We gain a much better understanding of your site if you include all the information you can. We'd like to see property boundaries, existing trails, parking, buildings, water bodies and streams, areas of cultural significance, ecological concerns, etc. (A sample image can be viewed earlier in this document, along with a video tutorial.)
3. What is the approximate size of your land parcel?: multiple choice - 1-15, 15-50, 50-250, 250-500, +500
4. What is the total project area acreage?: multiple choice - 1-15, 15-50, 50-250, 250-500, +500. \*Projects under 15 acres in size are not well-suited for trail projects. They are much better used for bike parks, pump tracks or skills areas.
5. Who owns this land? Select all that apply: federal agency, state, city, county, private, other
6. What type of grant outcome are you looking for? Multiple choice: feasibility study, planning document, design document, construction bid package. (These are explained in the application.)
7. Describe the area where you wish to see trails and/or bike park facilities planned. Include details about topography, vegetation types, resource concerns; proximity to local and regional population centers; proximity to local schools; proximity to campgrounds, parking lots, day-use areas, and other recreation infrastructure.
8. What previous natural surface recreational trail planning processes have been completed in this area? Please describe the type of planning effort, who led it, what agencies were involved and how it was funded. What was the outcome? Please attach any relevant planning documents, which could include a detailed description or deck of the project; including details on location, community impact, need, trail plans and/or maps.
9. Trails that are easily accessible by residents provide high value in terms of recreation, health and community engagement. How will your project provide those benefits?
10. Does this project create opportunities for youth mountain bike programs, or have the potential to integrate with existing programs? Please describe.
11. Does this project increase diversity, inclusion, and equity among trail users? How will this project address equity in access? For example, will the project create a venue for after-school programs or offer access to riders with disabilities? If you answer yes, please list the names of any partner groups and explain your partnership with them.
12. We want to learn how you intend to take this planning work to the next level. If awarded this grant, how does your organization plan to implement the project?

# Section 4: Scope of Work

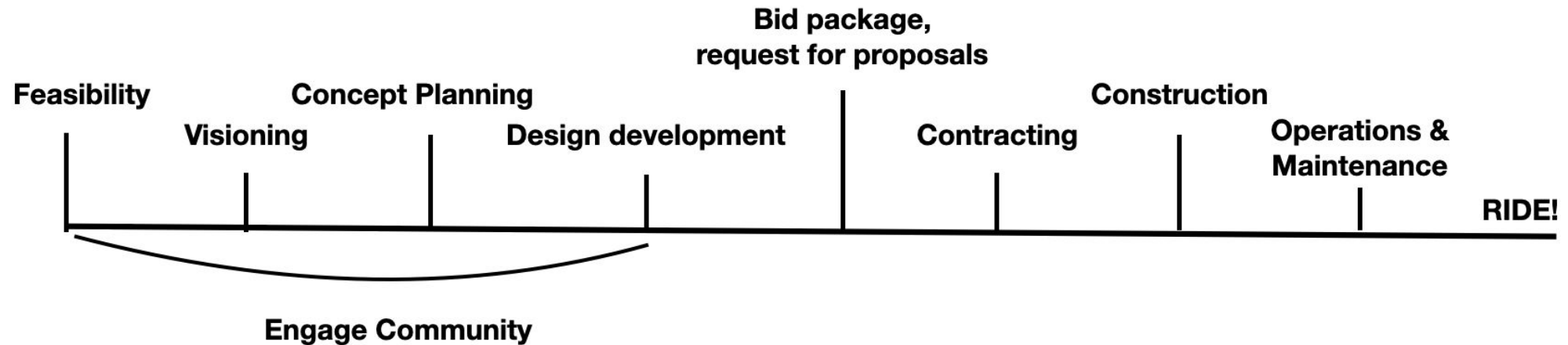
1. What are you trying to build? Multiple choice: bike park, trails, both
2. What bike park amenities? Select all that apply: pump track, skills features, drop zone, slopestyle line, dirt jumps, other
3. What style/s of trails? Select all that apply: traditional singletrack, bike-optimized trails, flow/jump trail
4. Who will use the trails in addition to mountain bikers? Select all that apply: pedestrians, horses, adaptive equipment, motorcycles
5. Will any of the trails be single-use? Select all that apply: yes, hiker only; yes, biker only
6. What is your best guess of mileage of the proposed trails?
7. What other amenities already exist in your project area? Select all that apply: existing trails, parking, signage, restrooms, sports fields, other
8. Have you identified potential funding sources for the next steps? Yes, no
9. If yes, provide general range of fundraising to date, estimated cost required to implement, and costs for maintenance/management.
10. Do you have construction phases in mind? Give us an idea of how you envision construction unfolding.
11. What kind of construction team will you use? Select all that apply: volunteer, professional, in-house, hybrid
12. What kind of construction methodology do you plan to use? Mechanized, hand built, both
13. Are you looking for field-based trail design and flagging at this point in your project? Yes, no
14. Does your organization typically include public engagement efforts (open meetings, public comment sessions, surveys) in projects like this? yes, no
15. Describe what kind of public engagement you usually employ.
16. Do you wish to have IMBA facilitate any of these efforts? Yes, no



# Section 5: Project Timeline

1. What is your preferred timeline to start and complete this project? Give us a general sense of when you see your project hitting the milestones in the timeline shown. (Please note that location, weather and seasons will influence start times and completion dates. For example, field work in some places may not be possible from November to April due to snow cover. In extremely hot and/or humid environments it may not be efficient to perform fieldwork between June and August due to dense vegetative growth.)

## Typical Project Timeline



# Section 6: Funding Needs and Understanding

1. This is an in-kind grant, and if successful, your project will be awarded staff time from IMBA Trail Solutions department (and qualified subcontractors), who will complete an agreed-upon trail planning process in your community. This is not a cash grant. Do you agree?
2. This is a one-to-one matching grant. For example, if you request and are awarded a \$5,000 grant, you must commit an additional \$5,000 payable as a check or electronic payment to IMBA. If you are awarded a \$30,000 grant, you must commit an additional \$30,000 payable as a check or electronic payment to IMBA. Twenty percent of your match is due within 30 days of the award and you will receive progress invoices at project milestones. Do you agree?
3. To be awarded this grant, you must understand how your agency will disburse your share of the funds. Within municipalities, for example, the funds must be obtained through a process called “procurement.” Before submitting this application, contact your procurement or accounting department and learn what steps are required to access the money. Do you agree?

Finalists will receive a call from IMBA Trail Solutions to clarify any questions and to discuss and further define the scope of work, tasks, and final deliverables of the Trail Accelerator Grant project. A phone call does not mean that a grant has been awarded. For grant awardees, the agreed-upon trail planning process will be different for each site based upon the desired outcomes and will be clearly documented in a contract between the applicant and IMBA.

# We are here to help!

If you still have questions about the application, or are feeling overwhelmed by the process, reach out to us! We want to see your trails and bike parks come to life, and we can guide you anywhere you're stuck on this application. No trail-nerd skills needed.

Marty Caivano  
Community Engagement Coordinator  
(303) 588-1530  
[marty.caivano@imba.com](mailto:marty.caivano@imba.com)



Are you an IMBA Local Partner organization? Or are you working with one?



Check out our [Dig In Program](#), another way to raise funds for your trail dreams.

An aerial photograph of a mountain trail winding through a landscape of red soil and green vegetation. A hand-drawn black sketch is overlaid on the image, depicting a mountain biker in a teal jersey riding a trail. The sketch uses bold, expressive lines to define the terrain and the rider's path.

Thank you for applying, and  
supporting IMBA as we accelerate the  
pace of trail building.  
**#MoreTrailsClosetoHome**



INTERNATIONAL MOUNTAIN BICYCLING ASSOCIATION

## Richard Kohler

---

**From:** Erin Trauger <erin.trauger@gmail.com>  
**Sent:** Wednesday, March 10, 2021 2:09 AM  
**To:** Lisa Morrell; Murray.Hann@l3harris.com; Richard Kohler  
**Subject:** Malabar Connectivity Project  
**Attachments:** Malabar Connectivity Project Draft Concept.pdf

Hi Team,

Hope all is well! I have attached a rough draft plan with the pathway overlaid onto aerials from BCPAO. This is relatively close to scale for rough estimates and discussion purposes but only for early stages. I have listed below some questions and some thoughts on how the project might proceed logistically. I also went through the AI Tuttle plans that were provided and they seemed to include extensive details for a paved path. I thought after reviewing the information below we might put our minds together on what the plans for this project might look like and what level of detail you want up front. I am happy to help with some scope determination along the way as we go and then provide a proposal for efforts once we determine that extent. My son's spring break is next week so I will be a little more limited on my availability but the following week I will be back at it fully with time to meet or talk if desired. Thanks for your patience in letting me put my head around the needs of this project. I have a few more questions than when we started but here's to hoping they will be helpful in getting us to where we want to go. Thanks again for thinking of me for this project!

ET

### Coordination Questions:

1. Do we want a parking lot, if so this might start to trip thresholds for stormwater treatment requirements?
2. Do we want to shift the fence to create a T-turn for emergency access at the end of the street (related to parking)?
3. Is there a suggested minimum radius that our resident biking experts would like to see? There are FDOT standards but this is definitely not FDOT so we have some flexibility.
4. I did some research and we do have the potential of getting a wooden deck type trail over the marsh area approved without mitigation or potentially stormwater treatment, is there interest there or do we want to go around as shown (seems to be the less expensive option).
5. Do we want to pave the length of Corey Road to tie into the new bike path?
6. The AI Tuttle typical sections are included on the PDF but it seems for a portion of the path a small swale was provided to collect water. Since we don't have elevations yet it might be the more conservative approach to assume we might need a relief swale for stormwater conveyance along the path.
7. As laid out it seems the length of the path might be around just over 1,400 LF with a width of impact of about 25-30 feet depending on adjacent grades etc. (all approximations). Murray, is this similar to what you anticipated?
8. We will need survey information. Murray, did you want me to contact Kevin to talk through the details of what we'd need or did you want to coordinate with him directly?
9. We will need soils information to determine SHWT, I often work with KSM and could contact them for a proposal for efforts. I can do this now or once we have completed a more detailed review of the concept. Let me know your timing preference.
10. We will need wetland delineation information, I often work with Jon Shepherd with Atlantic Environmental Solutions and can contact them for a proposal for efforts. Similar to soils, I can do this now or when we have reviewed the path layout in more detail. Let me know your timing preference.
11. It seems permitting would be through the Town's engineering review, SJRWMD and potentially City of Palm Bay for connection to existing pavement to the north. Murray and Lisa, in your experience will I need to provide

plans or support for permitting with other reviewing agencies due to the trail connection aspect of the project? If so, maybe we could talk through the anticipated permitting support?

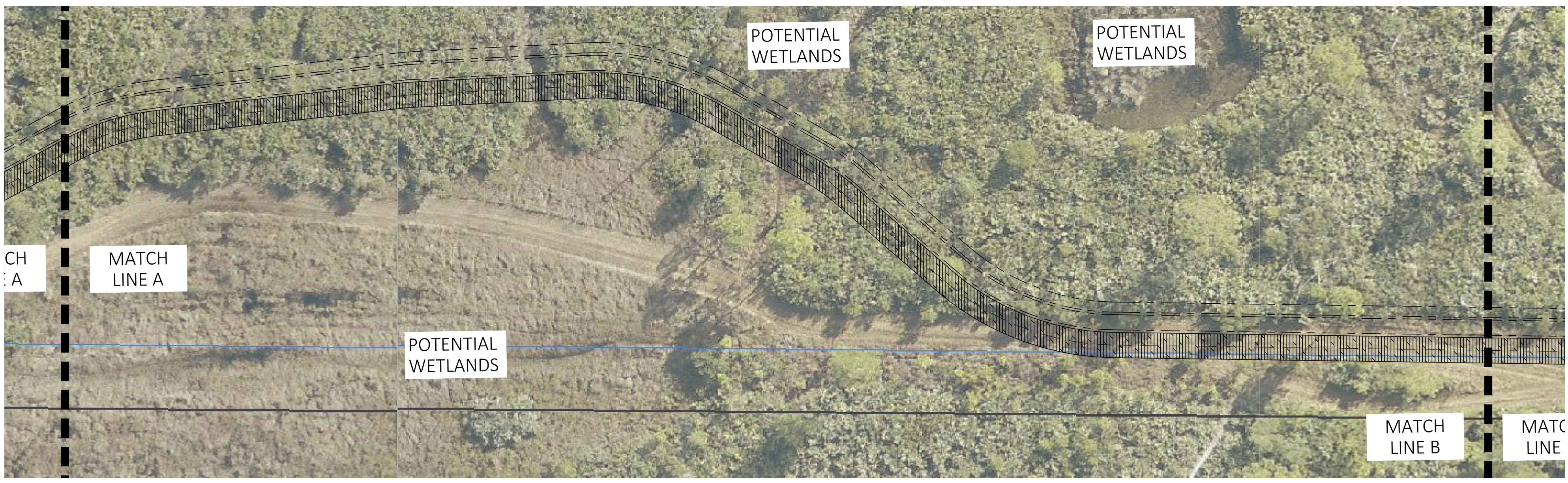
Anticipated Project Progression: Can the team add any thoughts on additional permitting coordination?

1. Review path layout and complete wetland reviews (since wetland locations might shift location) and meet with SJRWMD to discuss concept.
2. Get wetland boundaries and path of connection surveyed.
3. Finalize path layout and submit to SJRWMD for confirmation of exemption for permitting.
4. With exemption approved transition from Design Documents to Construction Documents for review and approval by Town of Malabar engineer.

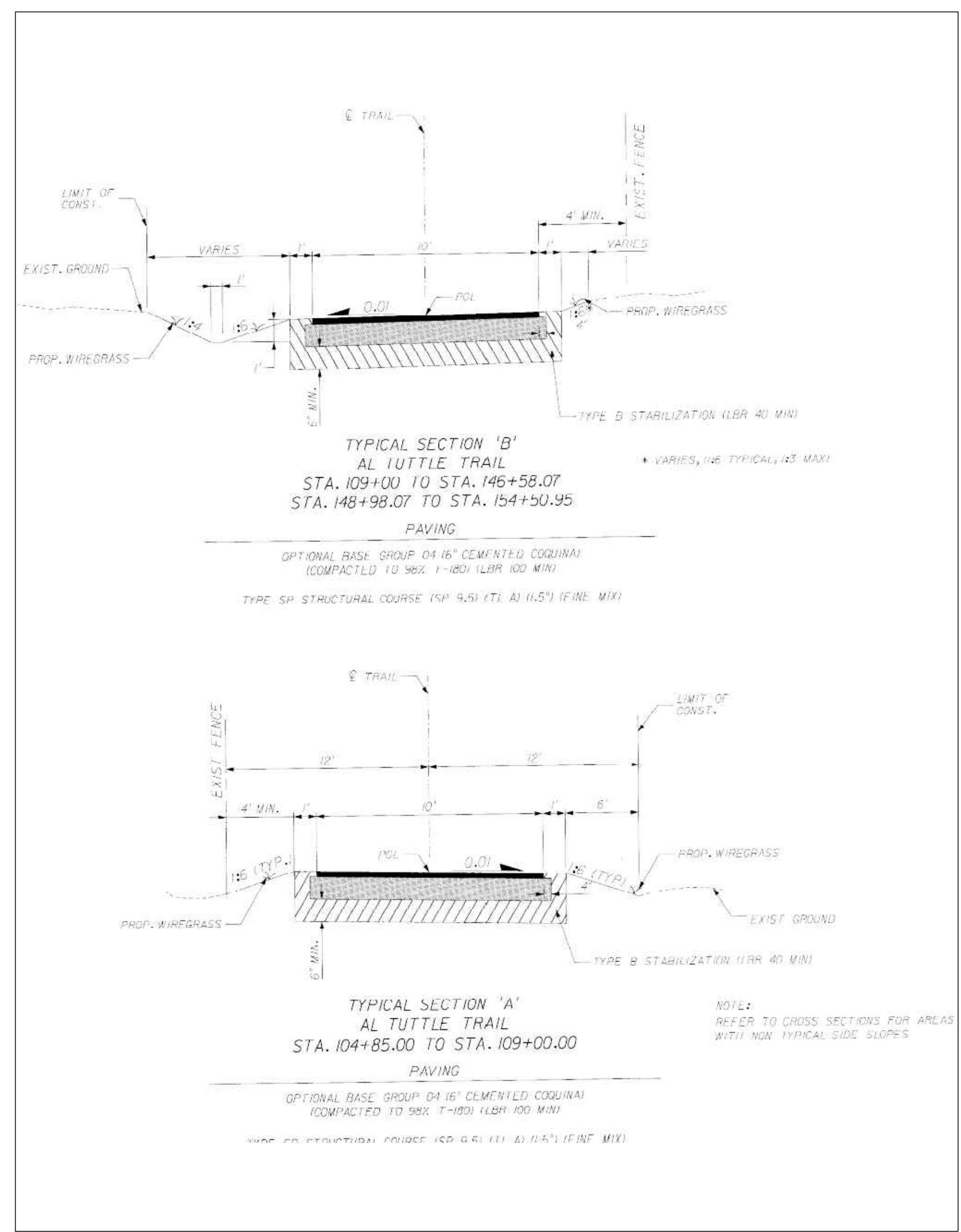
Thanks again, let me know if you'd like to schedule a meeting or a call to talk further after spring break. Stay healthy and have a great week!

ET

Erin Trauger, P.E.  
Civil Engineer  
Direct: 321-652-5316



SITE CONCEPT PLAN  
1"=30'



AL TUTTLE TRAIL TYPICAL SECTION  
NTS

REV#	DATE	REVISION

**TRAUGER CONSULTING ENGINEERS**  
 P.O. BOX #360253, MELBOURNE FL 32936-0253  
 email - erin.trauger@gmail.com phone - (321) 652-5316

MALABAR CONNECTIVITY PROJECT  
 TOWN OF MALABAR, FLORIDA  
 CONCEPTUAL SITE PLAN

**DRAFT**

ERIN L. TRAUGER  
 P.L.P. #000704

CONTRACT DOCUMENT  
 THESE DOCUMENTS AND THE CONTRACT ARE THE PROPERTY OF ERIN L. TRAUGER AND SHALL REMAIN THE PROPERTY OF ERIN L. TRAUGER. ANY REVISIONS, ADDITIONS, DELETIONS, OR MODIFICATIONS TO THESE DOCUMENTS WITHOUT THE EXPRESS WRITTEN CONSENT OF ERIN L. TRAUGER IS PROHIBITED BY LAW.

DATE: 3-10-21  
 SECTION: 36  
 TOWNSHIP: 28  
 RANGE: 37  
 SCALE: 1"=30'  
 DRAWING NO.

**EX-1**





# TOWN OF MALABAR

## TRAILS AND GREENWAYS COMMITTEE MEETING

**AGENDA ITEM NO: 7.C**  
Meeting Date: July 11<sup>th</sup>, 2022

Prepared By: Richard W. Kohler, Deputy Clerk/Treasurer

---

**SUBJECT: Eagles Nest Trailhead**

---

### **BACKGROUND/HISTORY:**

- a. The Trails and Greenway's Committee has begun work on the Eagles Nest Trailhead. The main parking area and fence line have been cleared.
- b. At the last T&GC Meeting, the Committee recommended CM Wilbur meet with Town Staff at the site to determine what additional land clearing activities were required.
- c. In late April, CM Wilbur met TM Stinnett and DT/C Kohler at the ENT for a field visit. Findings of the visit include
  - a. No further major Land Clearing activities required.
  - b. Malabar Public Works can provide fill dirt and machinery for spreading it along the fence line and driveway area.
  - c. Once dirt is provided, next step should be instillation of the fence line.
- d. On June 23rd, Town Staff released a Purchase Order to Bear Iron Works for a sifter. Once the new sifter has been delivered, Public Works will deliver "clean" dirt to the Eagles Nest Trailhead.

### **ATTACHMENTS:**

- a. None

### **ACTION OPTIONS:**

- a. None

**Town of Malabar**  
 2725 Malabar Road  
 Malabar, FL 32950 US  
 321-727-7764  
 townclerk@townofmalabar.org  
 www.townofmalabar.org

# Purchase Order

**VENDOR**  
 Bear Iron Works  
 2872 I-70 Business Loop  
 Grand Junction, CO 81501

**SHIP TO**  
 Town of Malabar  
 2725 Malabar Road  
 Malabar, FL 32950 US

**P.O. NO.** 1022  
**DATE** 06/23/2022

	DESCRIPTION	QTY	RATE	AMOUNT
PAPA Grizzly and related	12' wide grizzly with 1.5 inch rails, 3" rail spacing	1	9,850.00	9,850.00
PAPA Grizzly and related	1.5" removable	1	2,450.00	2,450.00
Shipping	shipping to 1435 Centre St, Malabar, FL 32950	1	1,998.00	1,998.00
M Streets & Roads:001-541.4610 Repairs/Main Roads				
* M Streets & Roads:001-541.4610 Repairs/Main Roads				
<b>TOTAL</b>				<b>\$14,298.00</b>

Approved By \_\_\_\_\_

Date \_\_\_\_\_ A/P Approval/Payment Process

TC/Tr. & AP Clk: *D. Ananda*  
 TA: *[Signature]*  
 CM Reviewer: \_\_\_\_\_  
 Date Paid: 6/30/2022  
 Check #: 63895  
 Acct: 541.4610



# Town of Malabar Purchase Requisition Form

Submitted by Thomas Milliore

Phone 3215368561

Email tmilliore@townofmalabar

Reason/Purpose Screen ditch spoilage for clean fill dirt

Purchase Method: Quote  Sole-Source  Contract  (Attach Copies / Backup Methods for Purchase Request)

Account Number (eg. XXX-XXX /525.3105) 541-4610

Total Purchase \$ 14,298.00

Item	Description	Unit of Measure	Quantity	Unit Price	Amount
1	Papa Grizzly 12 ft wide 3in rail spacing	Each	1	\$ 9,850.00	\$ 9,850.00
2	1 1/2 in removable screen	Each	1	\$ 2,450.00	\$ 2,450.00
3	Shipping	Each	1	\$ 1,998.00	\$ 1,998.00
4					\$ 0.00
5					\$ 0.00
6					\$ 0.00
7					\$ 0.00
8					\$ 0.00
9					\$ 0.00
10					\$ 0.00
<b>Total</b>				<b>\$ 14,298.00</b>	<b>\$ 14,298.00</b>

**Bear Iron Works**

2872 I 70 Business Loop  
CO 81501 US  
info@bearironworks.net



**BEAR IRON WORKS**

**Estimate**

ADDRESS  
Thomas Miliore  
Town of Malabar  
1435 Center street  
Malabar, FL 32901

SHIP TO  
Thomas Miliore  
Town of Malabar  
1435 Center street  
Malabar, FL 32901

ESTIMATE 1622  
DATE 06/15/2022

DESCRIPTION	QTY	RATE	AMOUNT
PAPA Grizzly A 12 ft wide grizzly with 1.5 inch rails. 3" rail spacing.	1	9,850.00	9,850.00
PAPA - 1 1/2" Removable Screen 1-1/2" removable screen for a PAPA Grizzly.	1	2,450.00	2,450.00

Please call Mike if you have any questions or decide to purchase. 970-250-2580

SUBTOTAL	12,300.00
SHIPPING	1,998.00
<b>TOTAL</b>	<b>\$14,298.00</b>

Accepted By

Accepted Date

*6/23/2022 TAX Exempt sent Requested W-9*



LAKE ERIE PORTABLE SCREENERS  
 9843 Martin Avenue  
 Lake City, PA 16423  
 United States of America

Ph: (814) 774-7080

Fax: (814) 774-7086

**Quote**

ID: 11096 Date: 15-Jun-22

**To**

Town of Malabar  
 1435 Center Street  
 Malabar, FL 32950-4427  
 United States of America

**Quote To**

Town of Malabar  
 1435 Center Street  
 Malabar, FL 32950-4427  
 United States of America

Ph: 321-727-7764

Fax: 321-727-9997

Ph: 321-727-7764

Fax: 321-727-9997

Terms		Ship Via		Salesperson
F.O.B Factory		Bestway		
Quantity	Description	Unit Price	Amount	
	Reference: PB148			
	Line: 001 Part: PB148 Stationary Grizzly Box Heavy duty welded construction from structural steel tubing. Each Grizzly includes 18 factory installed culling bars as standard which allows approx 4" material passthru. Features the ability to quickly and easily adjust culling bar spacing for different material thruput sizing. This Grizzly unit weighs approx 6450 pounds as standard from the factory.	Expiration Date: 14-Aug-22 Rev:		
1	ea	\$19,600.00	\$19,600.00	
		Total:	\$19,600.00	
<p>PRICES APPLY FOR THE DATE QUOTED ONLY ALL PRICING SUBJECT TO CHANGE</p> <p>ALL PRICES ARE QUOTED IN UNITED STATES CURRENCY</p> <p>Pricing on all quotes, DO NOT include any additional costs or fees. Including but NOT limited to Taxes transportation or shipping costs, and / or Optional Equipment.</p> <p>A 25% DEPOSIT is Required on all reserved and / or custom ordered Equipment.</p> <p>CANCELLATION OF ANY RESERVED OR CUSTOM ORDERS, WILL FORFIET ALL DEPOSITS WITH NO EXCEPTIONS</p>				

**63360 Powell Butte Hwy**  
**Bend, OR 97701**  
 www.rocktough.com  
**541-617-1107**

Date	Estimate #
6/14/2022	4306

**Name / Address**

**Ship To**

Town of Malabar, Florida  
 1435 Center Street  
 Malabar, FL 32901  
 Thomas Miliore  
 321-536-8561

Town of Malabar, Florida  
 1435 Center Street  
 Malabar, FL 32901  
 Thomas Miliore  
 321-536-8561

**Terms**

**FOB**

Pre Pay

Bend, OR

Item	Description	Qty	Unit Cost	Total
MSAHD12-3	12 Ft. Midsize Adjustable Bar Grizzly with Heavy Duty Deck Bars and a 3" deck bar spacing. 12' wide, 7' deep, 9.5' high, 5,400 lbs	1	22,057.00	22,057.00
Screen Overlay	1" clear opening X .244 wire diameter high carbon wire screen overlay	1	4,900.00	4,900.00
Freight	Deliver to: 32901	1	4,000.00	4,000.00
<div style="border: 1px solid black; padding: 5px; display: inline-block;"> <p><b>Quote is good for 30 days from date of issue</b></p> </div>				
			<b>Total</b>	<b>\$30,957.00</b>